

LUPIN BEACH
LOT 1, PLAN D



LUPIN
BEACH

HISTORICAL CONCEPTS, ARCHITECTURE & PLANNING



LEFT ELEVATION

4 Bedrooms | 1 Bunk Room | 4 Baths | 2 Half Baths

LOT 1 PLAN D

Ground Floor Conditioned Space: 240 sq. ft. First Floor Conditioned Space: 1370 sq. ft.
Second Floor Conditioned Space: 1325 sq. ft. Third Floor Conditioned Space: 890 sq. ft.
Total Conditioned Space: 3824 sq. ft.

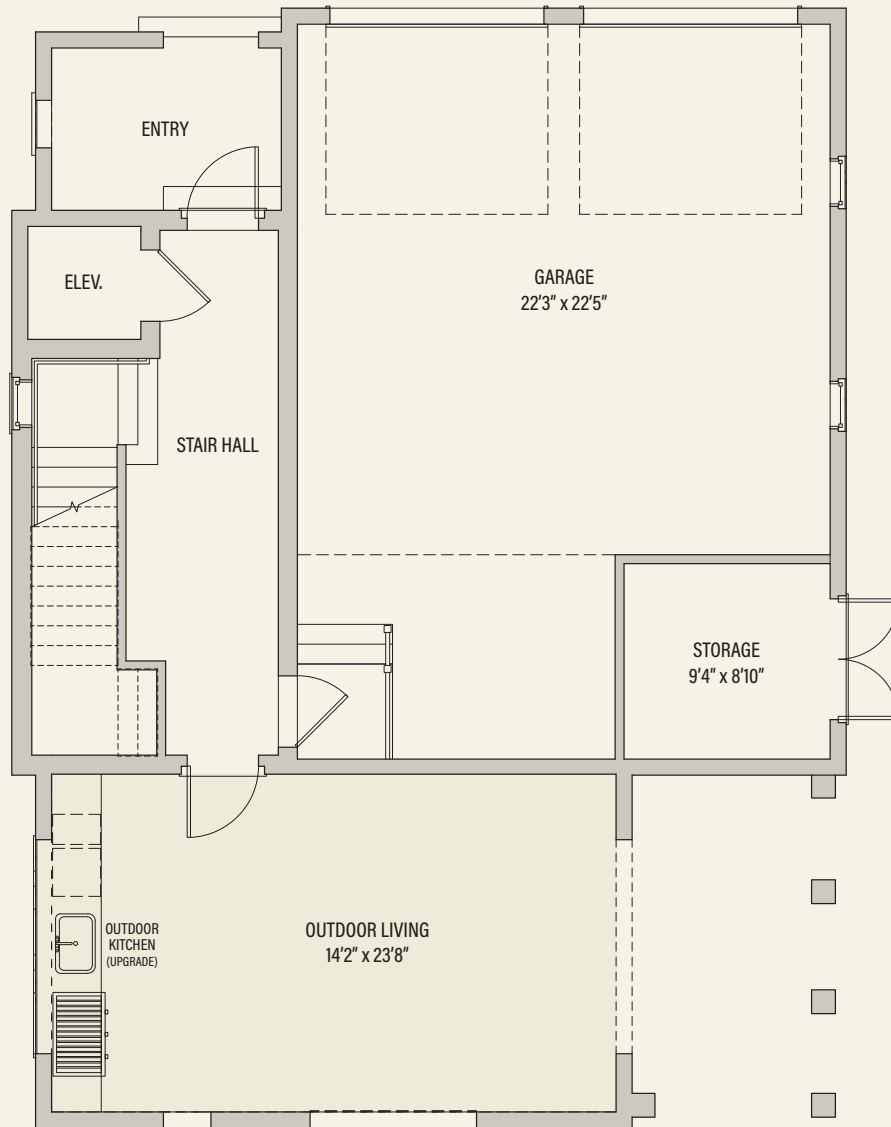
Unconditioned Porches, Outdoor Living, and Terrace: 697 sq. ft. Garage and Mech./Storage: 1211 sq. ft.
Total Unconditioned Space: 1906 sq. ft.



RIGHT ELEVATION

4 Bedrooms | 1 Bunk Room | 4 Baths | 2 Half Baths

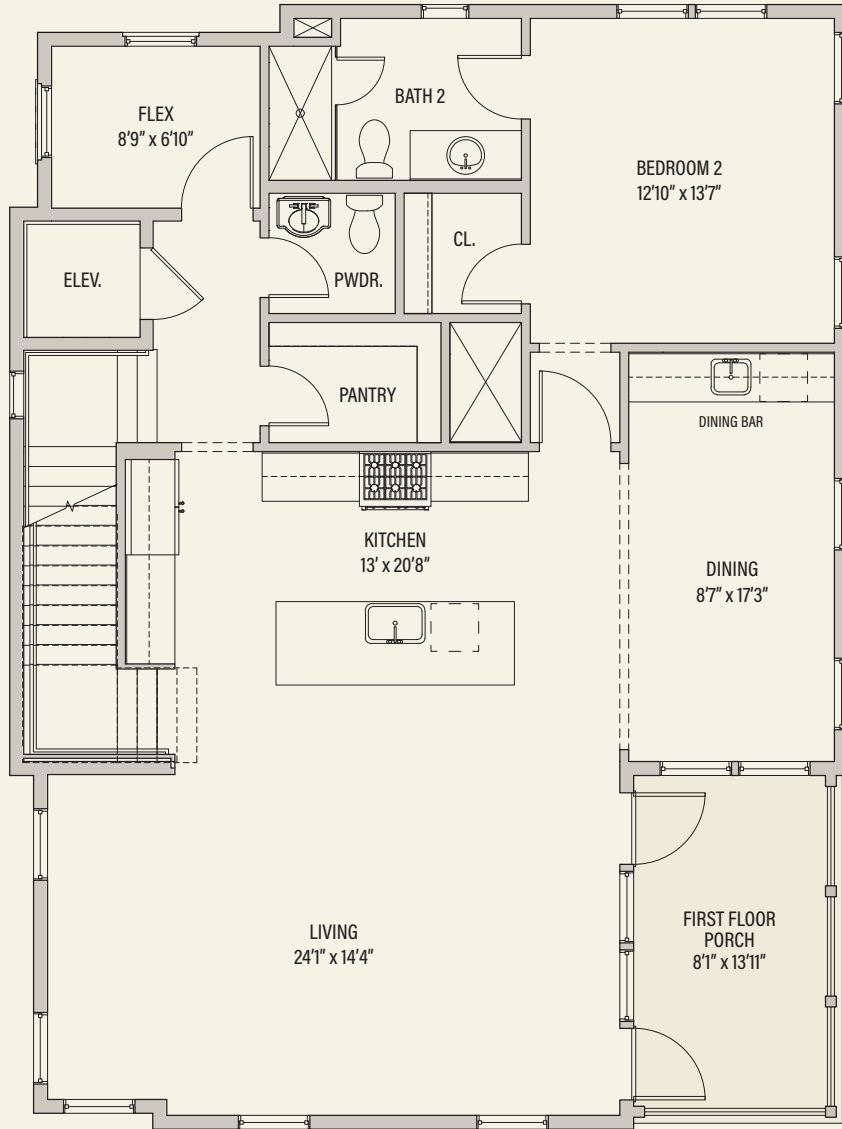




GROUND FLOOR

4 Bedrooms | 1 Bunk Room | 4 Baths | 2 Half Baths

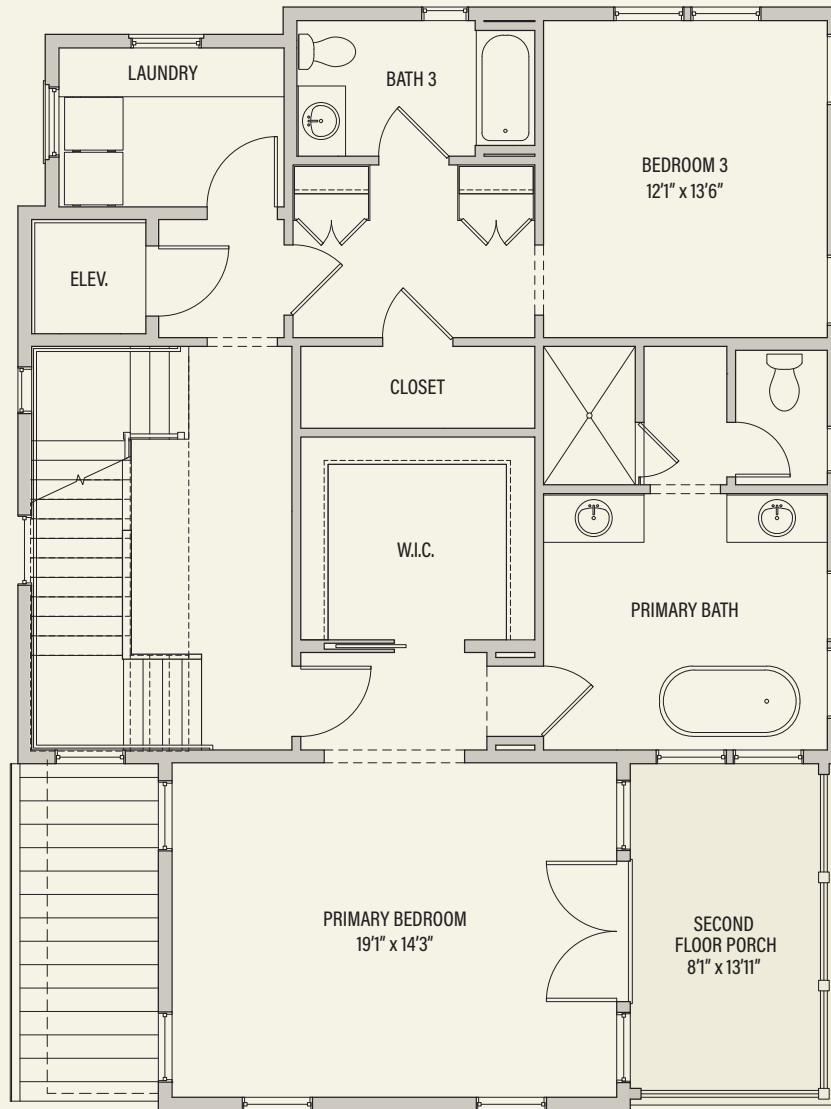




FIRST FLOOR

4 Bedrooms | 1 Bunk Room | 4 Baths | 2 Half Baths

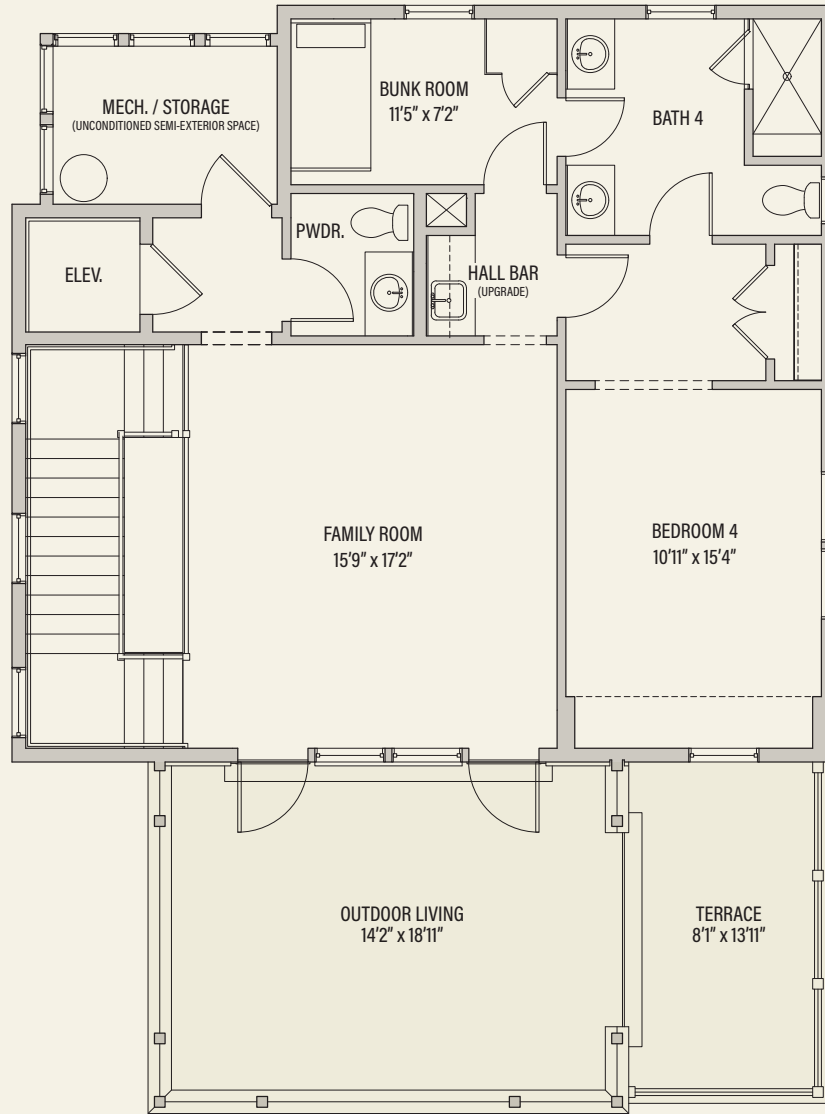




SECOND FLOOR

4 Bedrooms | 1 Bunk Room | 4 Baths | 2 Half Baths





THIRD FLOOR

4 Bedrooms | 1 Bunk Room | 4 Baths | 2 Half Baths





Town building is an art, and the design and construction of Lupin Beach is an ongoing process. The master plan, floor plans, features, and prices may change without notice. Illustrations are artist's depictions only and may differ from completed improvements. Room dimensions and square footages are approximate. This is not an offer to sell real property. (For that, please visit our local sales office.)
Void where prohibited by law. Equal Housing Opportunity.

Lupin Beach is a trademark of EBSCO Industries, Inc. © 2023

LUPINBEACH.COM